

For best results, please use **Google Chrome** or **FireFox** web browsers, and allow pop-ups or disable pop-up blockers



On-Campus Users:

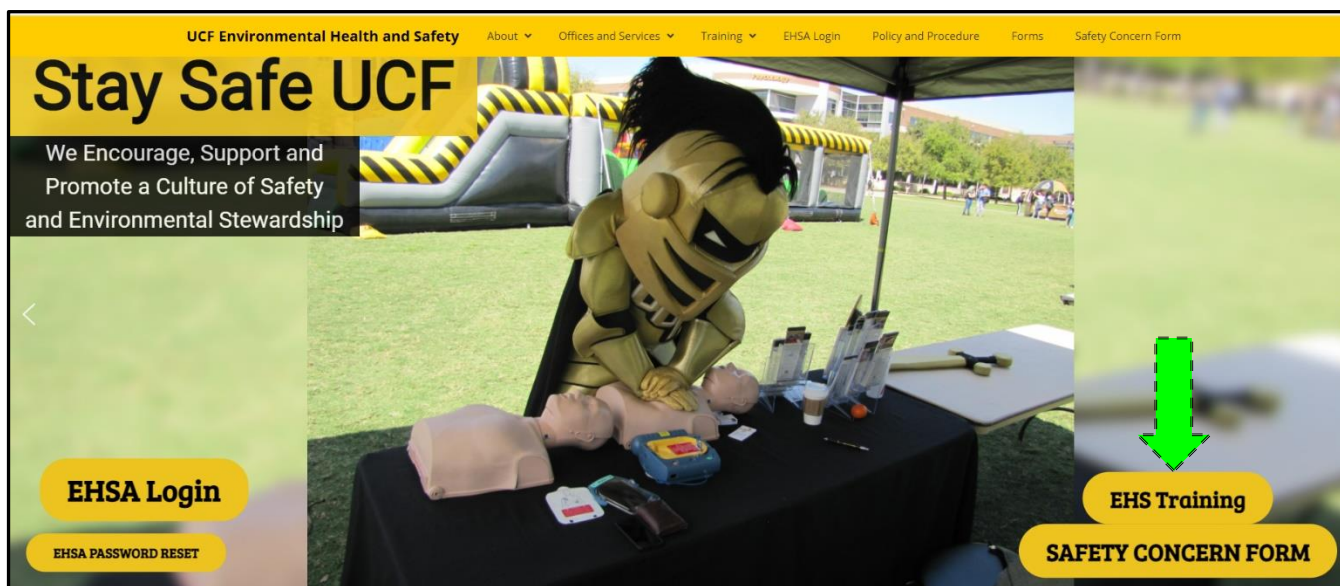
In order to register, you need to have a connection to UCF_WPA2 or be on a wired connection (Ethernet) other than UCF Student Housing. [Click here](#) for instructions on how to connect to UCF_WPA2.

Off-Campus Users:

If you have been given permission, you can access to the UCF Virtual Private Network (VPN) to have access to EHSA. [Click here](#) for instructions about using the VPN.

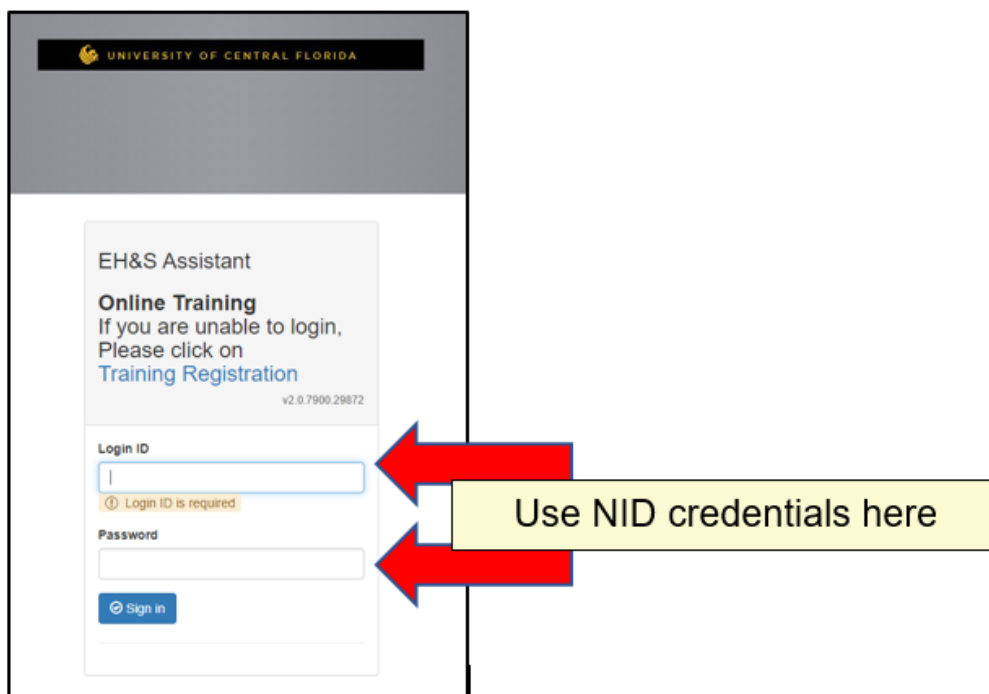
To register for classes via the [EHS website](#) use the following steps:

1. Click on “EHS Training”



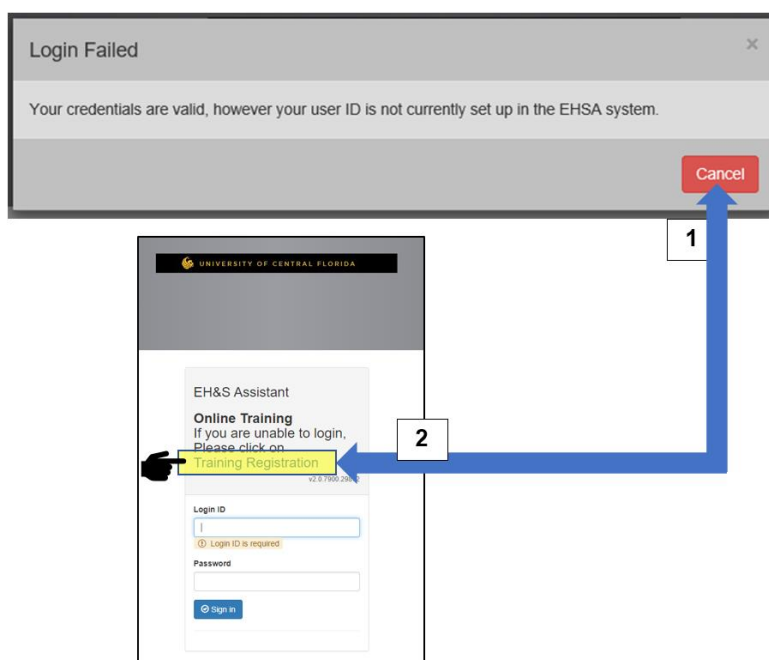
2. Login using NID credentials

If this link does not progress, please double check your pop-up blocker (disable or allow to go to EHS registration)



a. If you receive the “Login Failed” message below

1. Click “Cancel”
2. Click “Training Registration” on Login screen:
3. Input your information to register (complete required fields)



3. After logging in, select appropriate courses:

a. To select Web Based Courses, “select” desired courses on right:

Web Based Training Courses			
↑ Section ×			
	Course #	Description ↑	Topic
Start	EHS180	Animal Exposure Program Orientation (Online)	Animal Exposure
Start	EHS104	Biological Safety Annual Refresher (Online)	Biological Safety
Start	EHS102	Biological Safety Orientation (Online)	Biological Safety
Start	EHS140	Bloodborne Pathogens for Healthcare and Laboratories	Bloodborne

b. To Register for In-person Training, click In-person link on left:

Web Based Training Courses			
↑ Section ×			
	Course #	Description ↑	Topic
Start	EHS180	Animal Exposure Program Orientation (Online)	Animal Exposure
Start	EHS104	Biological Safety Annual Refresher (Online)	Biological Safety
Start	EHS102	Biological Safety Orientation (Online)	Biological Safety
Start	EHS140	Bloodborne Pathogens for Healthcare and Laboratories	Bloodborne

4. For Web-based training, proceed to WebCourses to begin activity

